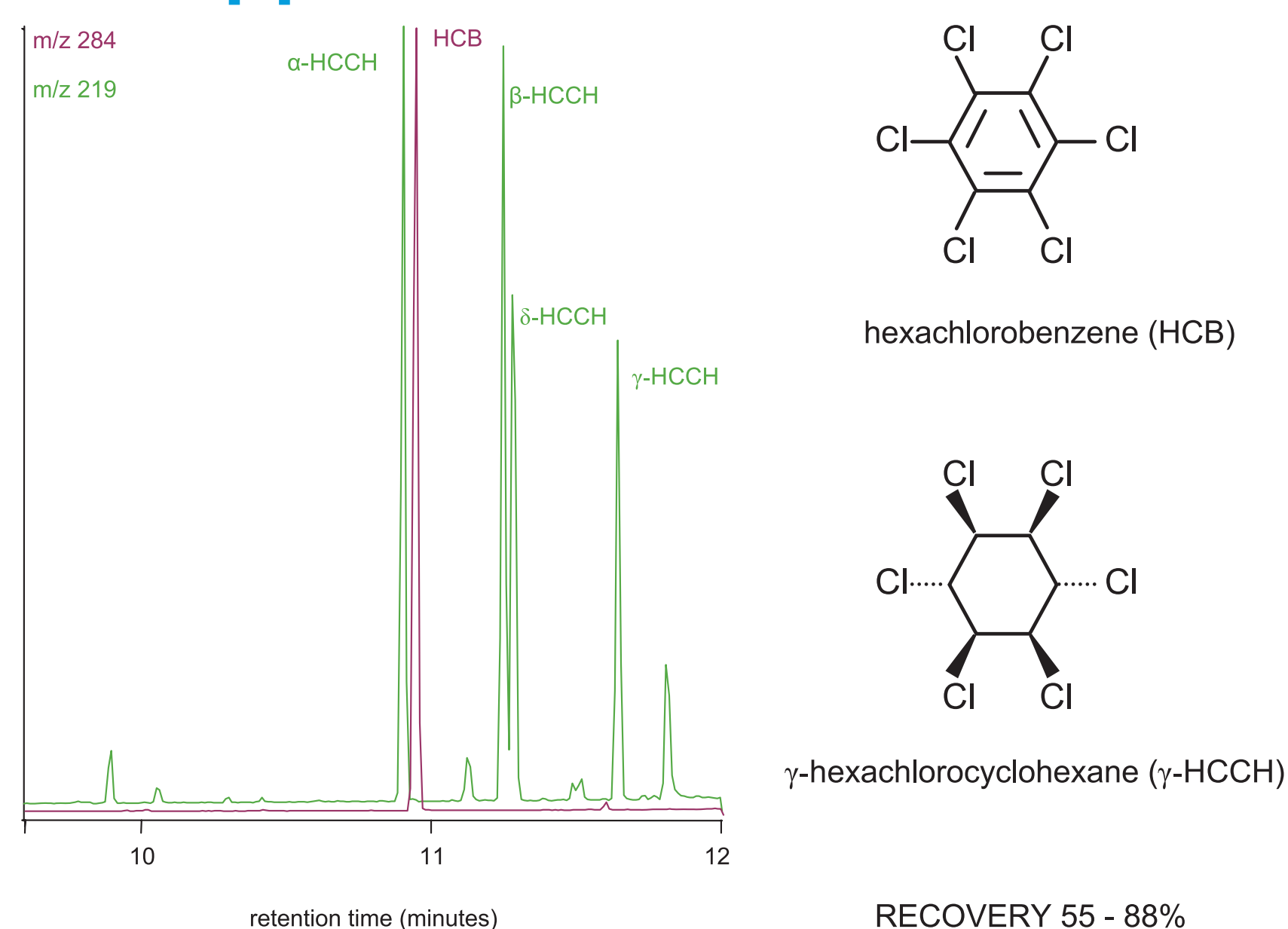


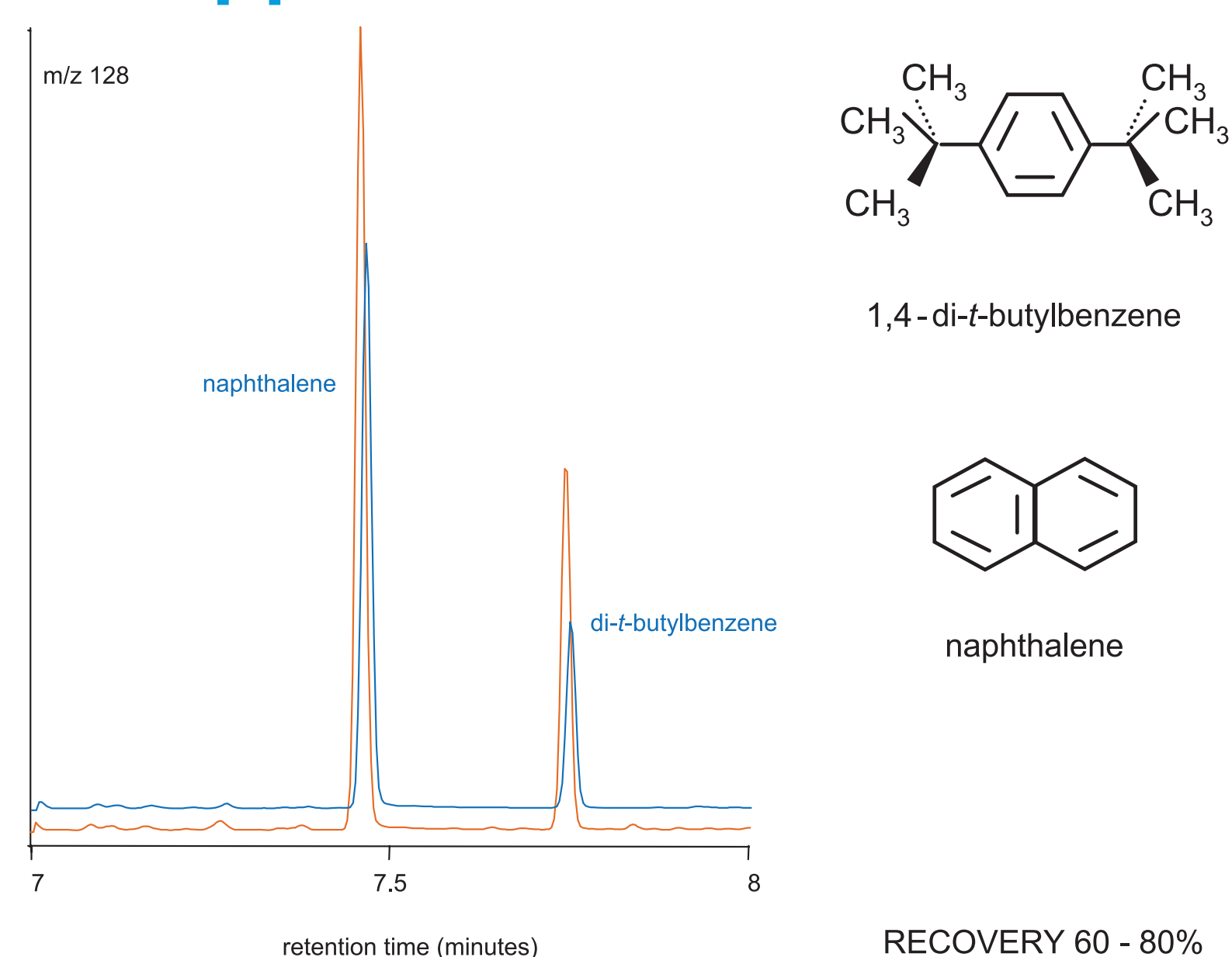
# MEPS FOR POLLUTANTS AND SMALL VOLUME SAMPLES

Paul Wynne  
SGE Analytical Science, 7 Argent Place, Ringwood VIC 3134 AUSTRALIA

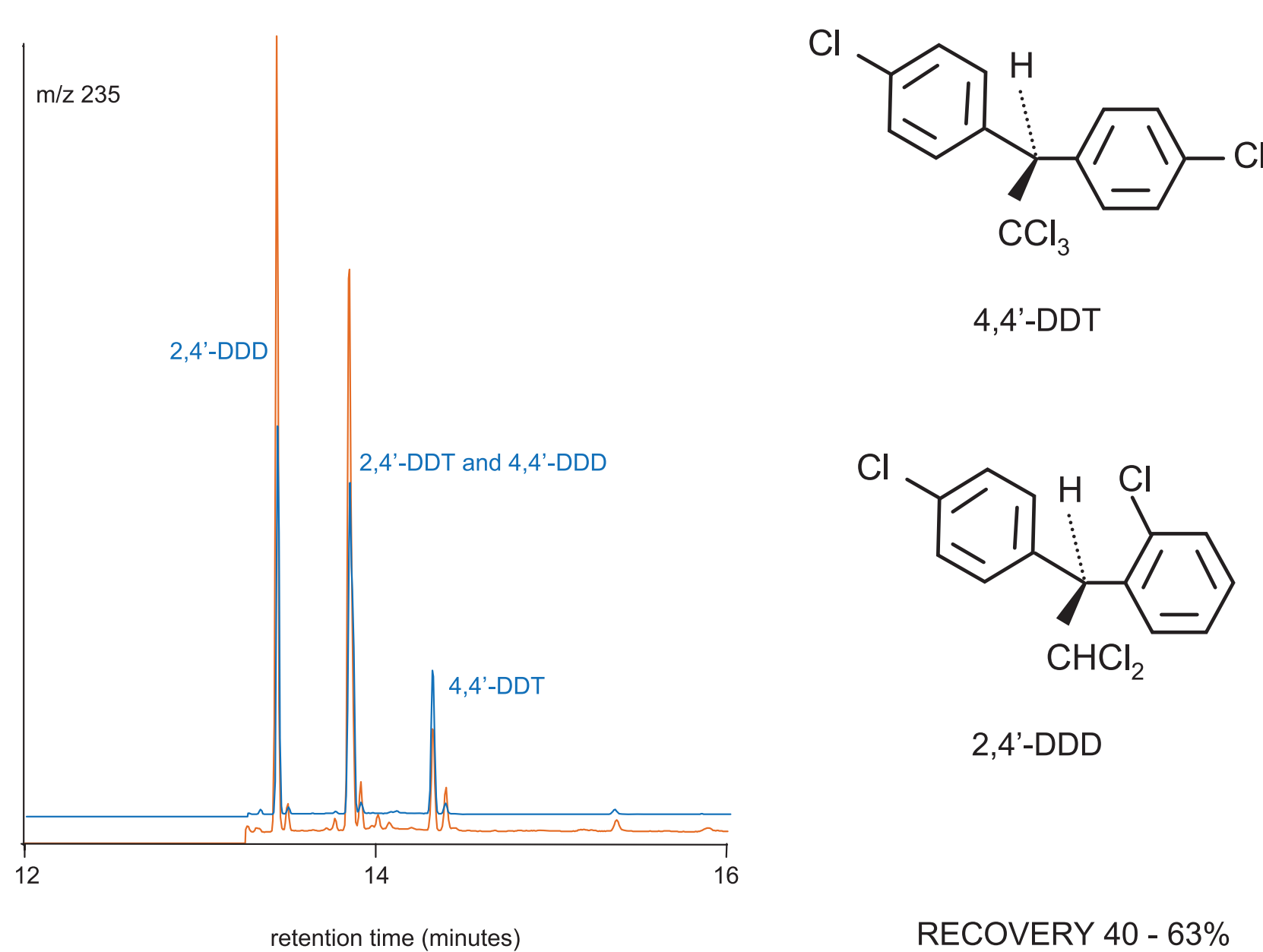
## HCCH and HCB 5 ppb



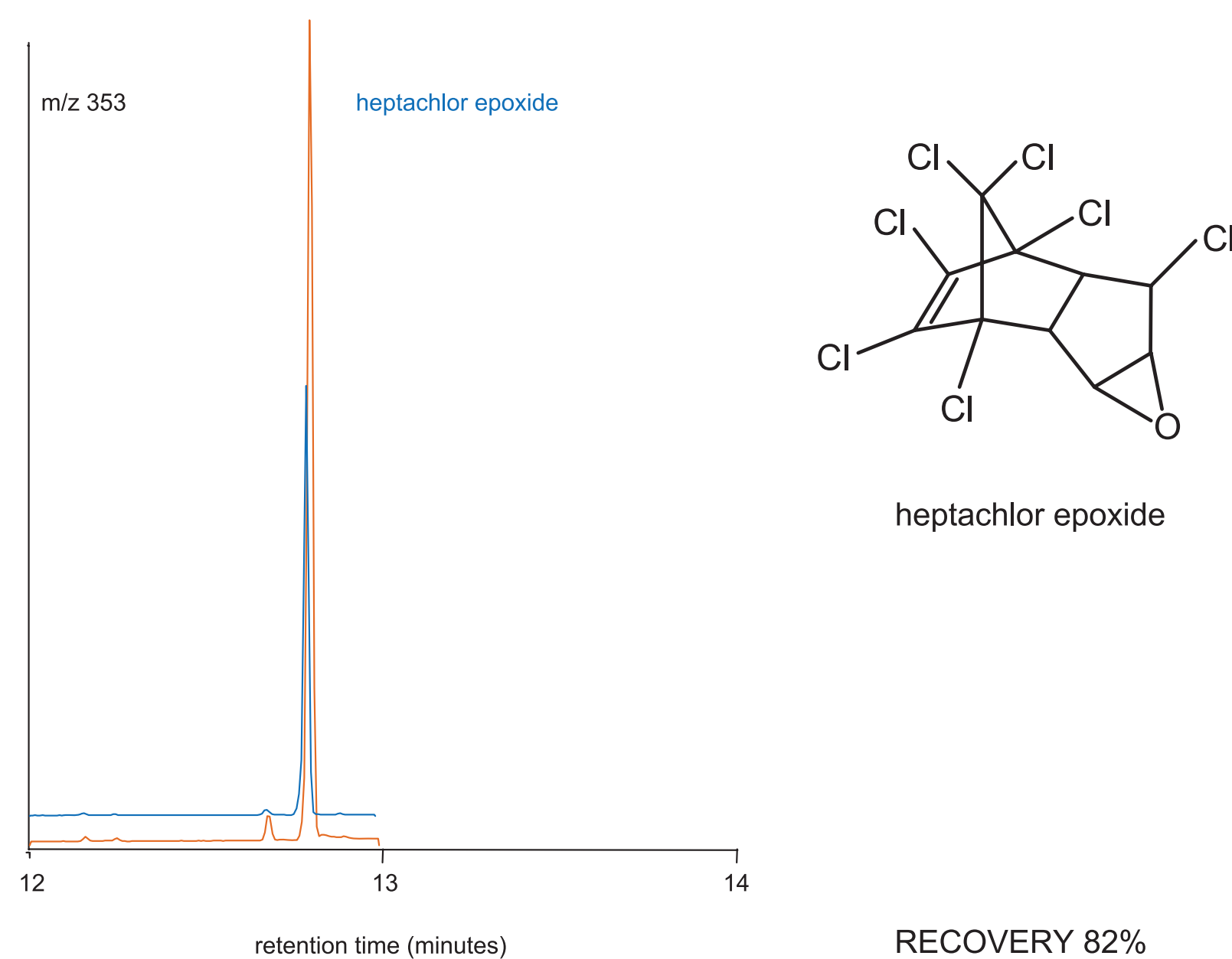
## NAPHTHALENE 5 ppb



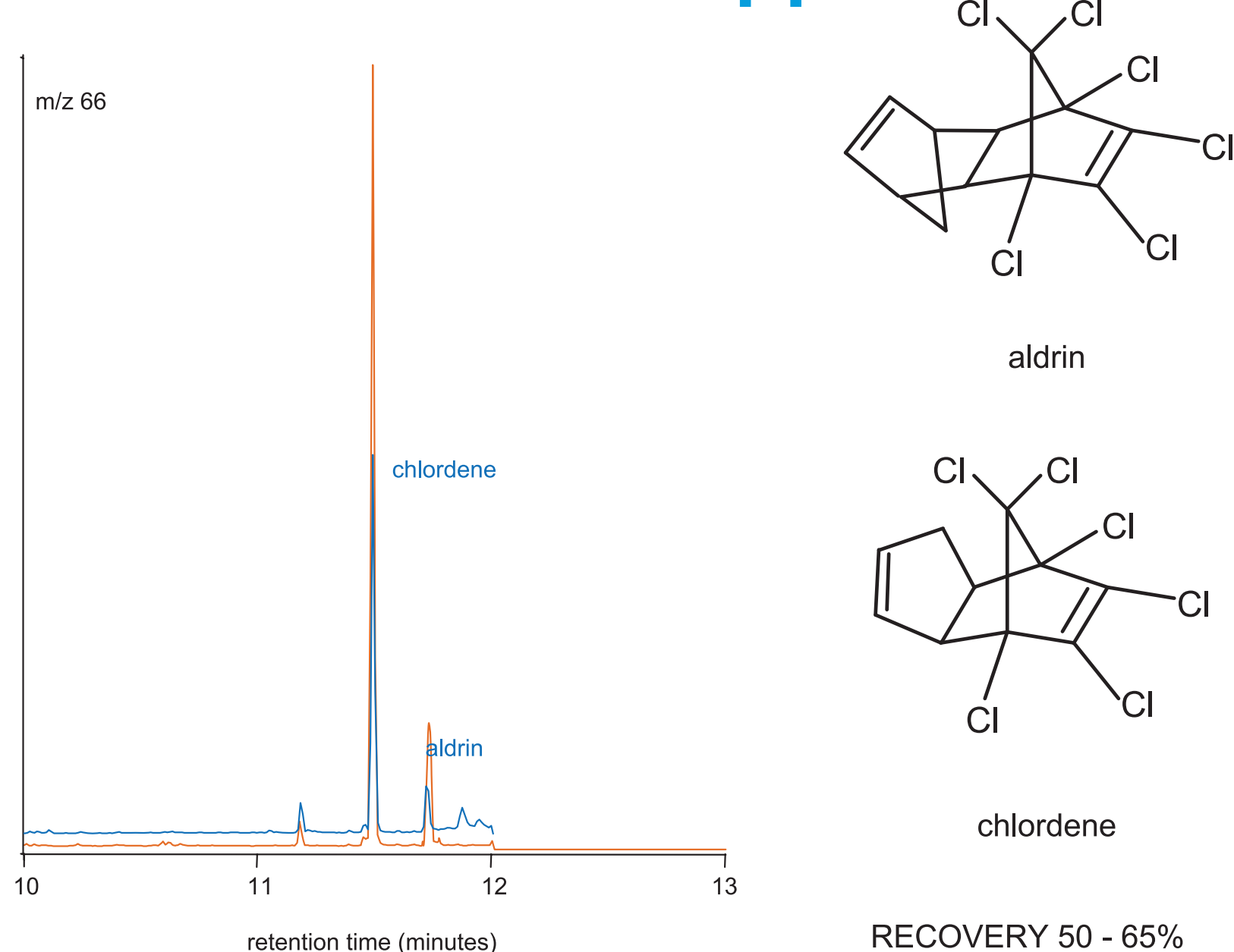
## DDT and related compounds 1 ppb



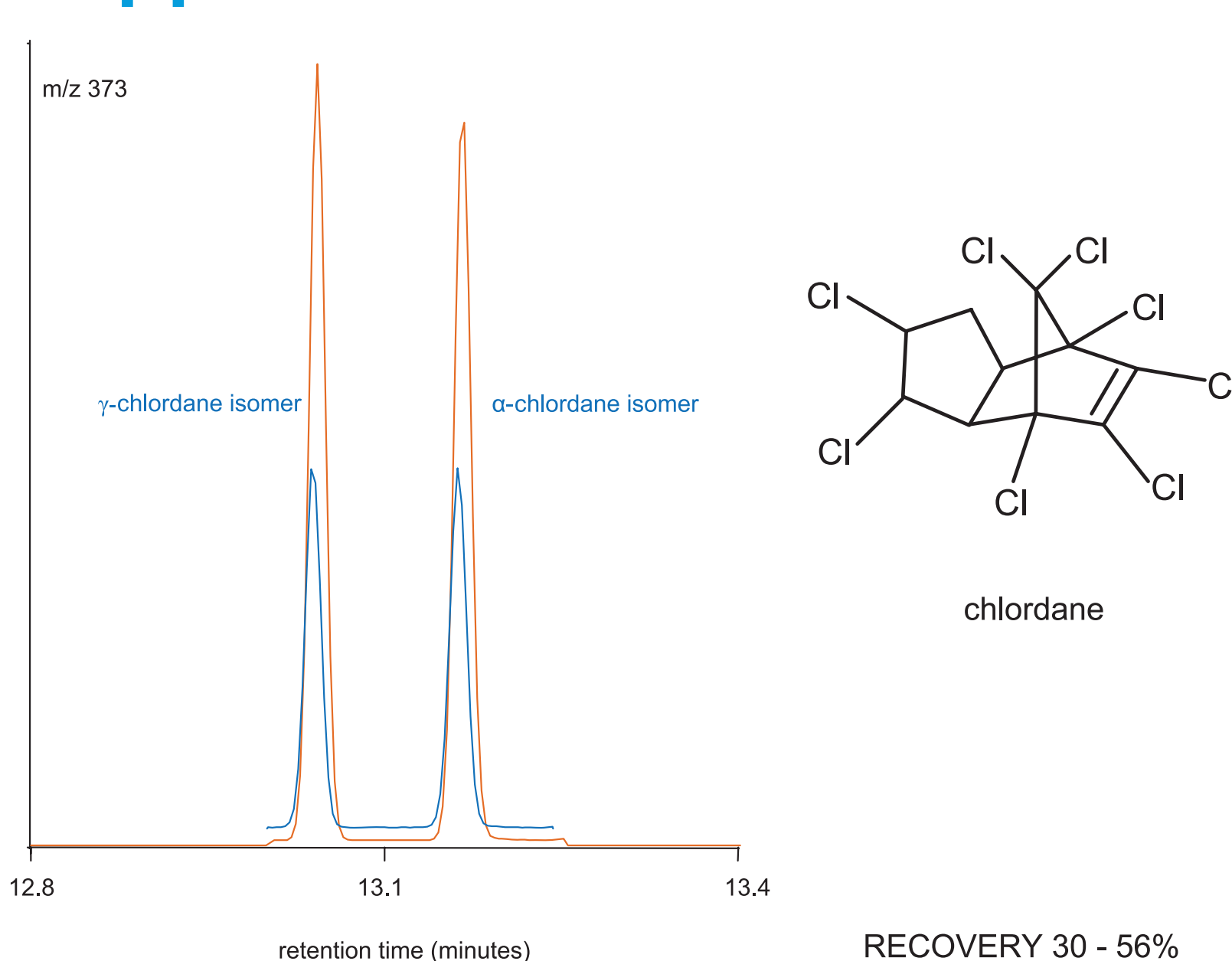
## HEPTACHLOR EPOXIDE 10 ppb



## CHLORDENE and ALDRIN 1-10 ppb



## CHLORDANE 5 ppb



### EXPERIMENTAL CONDITIONS

- MEPS extraction was performed by diluting 100 µL of a 10-100 ppb standard with 900 µL of water.
- The whole sample was extracted on a C18 MEPS cartridge conditioned with methanol and water.
- The sorbent was dried and eluted sequentially with 10 µL of isopropanol and 10 µL of dichloromethane into the same vial.
- A 1 µL portion of the eluate was separated on a BPX5 30 m x 0.25 mm i.d. with a 0.25 µm film thickness (SGE Analytical Science) in a 6890 GC-5973N MSD (Agilent Technologies) fitted with an ETP 14642 electron multiplier.
- Injection was splitless at a temperature of 250 °C.
- The carrier gas was helium with a nominal flowrate of 1.3 mL/min in constant flowrate mode and a nominal inlet pressure of 10.8 psi.

- The oven temperature was programmed from 50 °C (held for 2 minutes) to 270 °C (held for 15 minutes) at 20 °C/min.
- The transfer line was at 280 °C.
- MS experiments were in selected ion monitoring mode with an ion dwell time of 200 msec.
- For online use, the 20 µL combined isopropanol-dichloromethane eluate should be injected using a large volume injector.
- The MEPS cartridge was recycled in excess of 20 times by washing with dichloromethane (2 x 20 µL) and methanol (2 x 20 µL).
- Recovery may be improved by modifying the sample with surface active agents and increasing the ionic strength of the aqueous sample.
- Pure standards shown in orange. Extracted samples shown in blue.

For more chromatographic information visit [www.sge.com](http://www.sge.com) or contact your SGE technical specialist.



**AUSTRALIA & PACIFIC REGION**  
SGE Analytical Science Pty Ltd  
Toll Free: 1800 800 167  
Tel: +61 (0) 3 9837 4200  
Fax: +61 (0) 3 9874 5672  
Email: support@sge.com

**CHINA**  
SGE Shanghai  
Representative Office  
Tel: +86 21 6407 9382  
Fax: +86 21 6407 9386  
Email: china@sge.com

**FRANCE**  
SGE Europe Ltd  
Tel: +33 1 69 29 80 90  
Fax: +33 1 69 29 09 25  
Email: europe@sge.com

**GERMANY**  
SGE GmbH  
Tel: +49 (0) 6155 / 60746 0  
Fax: +49 (0) 6155 / 60746 50  
Email: europe@sge.com

**INDIA**  
SGE Laboratory  
Accessories Pvt Ltd  
Tel: +91 22 24715896  
Fax: +91 22 24716592  
Email: sgeindia@vsnl.com

**JAPAN**  
SGE Japan Inc  
Tel: +81 45 222 2885  
Fax: +81 45 222 2887  
Email: japan@sge.com

**MIDDLE EAST**  
SGE Gulf  
Tel: 00 971 6 557 3341  
Fax: 00 971 6 557 3541  
Email: gulfsupport@sge.com

**UNITED KINGDOM**  
SGE Europe Ltd  
Tel: +44 1908 568 844  
Fax: +44 1908 566 790  
Email: europe@sge.com

**UNITED STATES OF AMERICA**  
SGE Incorporated  
Toll Free: (800) 945 6154  
Tel: +1 512 837 7190  
Fax: +1 512 836 9159  
Email: usa@sge.com