

# Comparison of Geranium Oils on SolGel-WAX™

## DESCRIPTION OF ANALYSIS

The yield and relative distribution of components in essential oils varies with plant species, cultivar, agricultural conditions, geographic range and climate. Detection of the dilution or substitution of premium oils with poorer quality natural oil or synthetic oils is of importance to perfumers and other users of essential oils.

Comparative analysis of complex samples from raw chromatographic data is counterintuitive and a more effective technique subtracts the sample chromatogram from a reference chromatogram. The differential chromatogram allows a rapid assessment of batchwise changes in analyte distribution, provided retention times and peak shapes are highly reproducible.

Complete separation of closely related terpenoids is not always effective when using non-polar phases such as 100% dimethylpolysiloxane and 5% phenyl 95% dimethylpolysiloxane.

Complementary separation based on a H-bond accepting phase is particularly useful for resolving fragrant oils with alcohols and other polar components. Polyethylene glycol (or 'wax') phases provide the ideal polarity but are prone to oxidative phase loss which gives poor retention time reproducibility over time.

SGE's SolGel-WAX™ columns are much more resistant to oxidative phase loss than conventional wax phases, having lower bleed and greater retention time reproducibility with use.

## RESULTS

Figure 1a (see over) shows the overlaid chromatograms from two samples of Geranium oil. The green trace is the premium priced, high quality Geranium Bourbon from Reunion Island and the red- trace is geranium from South Africa. When one chromatogram is subtracted from the other (Figure 1b), the differences between the two samples are apparent. Low column bleed was important in the identification of the compounds by EI-GC-MS. In this example, the Geranium Bourbon sample contains more menthone (retention time = 14.71 min), linalool (17.42 min), and a-terpineol (21.56 min) than the substituted sample. The combination of low bleed and resistance to oxygen make SGE's SolGel-WAX™ columns an excellent choice for the QC analysis of essential oils.

## ACKNOWLEDGMENTS:

We thank M. Bernet and M. Didsch of the ISIPCA Group, Research and Studies Centre for Fragrance, Cosmetics and Food Flavours, France, for developing this application.

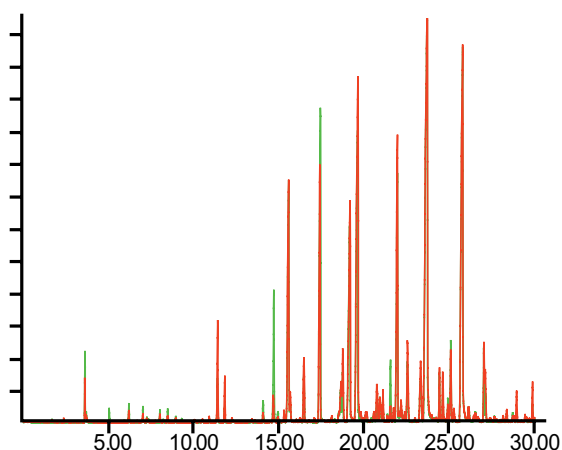


Figure. 1a: Comparison of total ion chromatograms (TIC) for Geranium oils from Reunion Island (green trace) and South Africa (red trace).

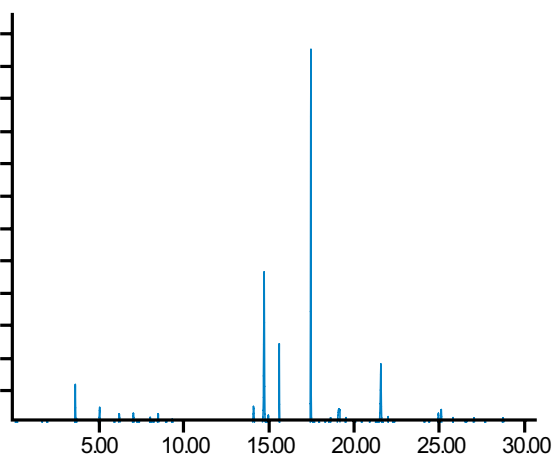


Figure. 1b: Subtraction of the two TIC chromatograms shows the difference between the two essential oils.

## EXPERIMENTAL CONDITIONS

<b>Column:</b>	SGE SolGel-WAX™, 30 m x 0.25 mm x 0.25 µm (SGE P/N 054796)
<b>Temperature Program:</b>	60 °C for 3 minutes, then 4° C/minute to 220 °C
<b>Carrier gas:</b>	Helium
<b>Flow:</b>	0.6 ml/mn
<b>Injection volume:</b>	0.3 µl split ratio 30:1
<b>Injection temp:</b>	250 °C
<b>Liner:</b>	SGE P/N 092019 single tapered with quartz wool

For more information contact our technical customer support team on: [techsupport@sge.com](mailto:techsupport@sge.com)

### AUSTRALIA & PACIFIC REGION

SGE Analytical Science Pty Ltd  
Toll Free: 1800 800 167  
Tel: +61 (0) 3 9837 4200  
Fax: +61 (0) 3 9874 5672  
Email: [support@sge.com](mailto:support@sge.com)

### CHINA

SGE Shanghai Representative Office  
Tel: +86 21 6407 9382  
Fax: +86 21 6407 9386  
Email: [china@sge.com](mailto:china@sge.com)

### MIDDLE EAST

SGE Gulf  
Tel: +971 6 557 3341  
Fax: +971 6 557 3541  
Email: [gulfsupport@sge.com](mailto:gulfsupport@sge.com)

### EUROPE

SGE Europe Ltd  
European Head Office  
Toll Free: 00800 2790 8999  
Toll Free Fax: 00800 2626 2609  
Tel: +44 1908 568 844  
Fax: +44 1908 566 790  
Tel France: +33 1 69 29 80 90  
Fax France: +33 1 69 29 09 25  
Tel Germany: +49 (0) 6155 / 60746 0  
Fax Germany: +49 (0) 6155 / 60746 50  
Email: [europe@sge.com](mailto:europe@sge.com)

### INDIA

SGE Laboratory Accessories Pvt Ltd  
Tel: +91 22 24715896  
Fax: +91 22 24716592  
Email: [sgeindia@vsnl.com](mailto:sgeindia@vsnl.com)

### UNITED STATES OF AMERICA

SGE Incorporated  
Toll Free: (800) 945 6154  
Tel: +1 512 837 7190  
Fax: +1 512 836 9159  
Email: [usa@sge.com](mailto:usa@sge.com)

### JAPAN

SGE Japan Inc  
Tel: +81 45 222 2885  
Fax: +81 45 222 2887  
Email: [japan@sge.com](mailto:japan@sge.com)

 **SGE Analytical Science**  
[www.sge.com](http://www.sge.com)