

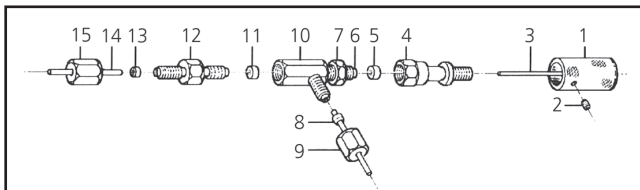
STAINLESS STEEL ON/OFF VALVE

SMOV-1

Important

Turn off all flows before installing the valve or when replacing parts. The SMOV is designed to accept 1/16" OD flow lines. When operated at elevated pressures (up to 400 atmospheres) we recommend ends of the 1/16" connecting line be roughened to provide a firm grip for the ferrules.

PART NO. 1236283



Vespel® Seat (11)

Replacement

Remove 1/16" line (14) and disconnect double ended union (12) then fully tighten control knob (1) onto assembly (4). This action pushes the Vespel® Seat from a support shoulder inside the valve body (10) which should then easily dislodge. If not, remove assembly (4) from body (10) and dislodge seat using seal-seat remover (wire). Insert wire through male threaded section (6) of body (10) to dislodge seat. Fit new seat into body (10) and reconnect double ended union (12) and firmly tighten. If control knob & assembly (4) has been removed, you should reconnect them using the following procedure:

- (i) Wind down the lock nut (7) to the base of thread (6).
- (ii) Unscrew control knob (1) a few turns from assembly (4).
- (iii) Screw (4) onto (6) and firmly

finger tighten.

- (iv) With a holding spanner on (4) and using another spanner, firmly tighten lock-nut (7) up to (4).

PTFE Seal (5) Replacement

Two spare seals are provided in the unlikely event replacement is required. The PTFE seal (5) is located inside assembly (4). The method for replacement is as follows:

- (i) Remove assembly (4) from thread 6.
- (ii) Unscrew 6BA grub screw (2) from control knob (1) then unwind control knob from assembly (4).
- (iii) With the seal seat remover (wire) push out seal.
- (iv) Fit new seal and reassemble using the procedure indicated in items (i) to (iv) for Vespel® Seat Replacement.

Packing List for SMOV

1236283	SMOV Valve	1
072657	GVF/16 Ferrules	5
1236101	Seal Seat Remover Tool	1
123681	VSV-6 Valve Seat	1
072650	PSR/16 PTFE Sealing Rings	2

AUSTRALIA & PACIFIC REGION

SGE Analytical Science Pty Ltd
Toll Free: 1800 800 167
Tel: +61 (0) 3 9837 4200
Fax: +61 (0) 3 9874 5672
Email: support@sge.com

CHINA

SGE Shanghai Representative Office
Tel: +86 21 6407 9382
Fax: +86 21 6407 9386
Email: china@sge.com

FRANCE

SGE Europe Ltd
Tel: +33 1 69 29 80 90
Fax: +33 1 69 29 09 25
Email: europe@sge.com

GERMANY

SGE GmbH
Tel: +49 (0) 6155 / 60746 0
Fax: +49 (0) 6155 / 60746 50
Email: europe@sge.com

INDIA

SGE Laboratory Accessories Pvt Ltd
Tel: +91 22 2471 5896
Fax: +91 22 2471 6592
Email: sgeindia@vsnl.com

JAPAN

SGE Japan Inc
Tel: +81 45 222 2885
Fax: +81 45 222 2887
Email: japan@sge.com

MIDDLE EAST

SGE Gulf
Tel: 00 971 6 557 3341
Fax: 00 971 6 557 3541
Email: gulfsupport@sge.com

UNITED KINGDOM

SGE Europe Ltd
Tel: +44 1908 568 844
Fax: +44 1908 566 790
Email: europe@sge.com

UNITED STATES OF AMERICA

SGE Incorporated
Toll Free: (800) 945 6154
Tel: +1 512 837 7190
Fax: +1 512 836 9159
Email: usa@sge.com